



[www.sewerinspectionpros.com](http://www.sewerinspectionpros.com)



29 March, 2014

Date of inspection : March 28 , 2014 - Time : 4:30 p.m. Technician : Charles Brunsmann

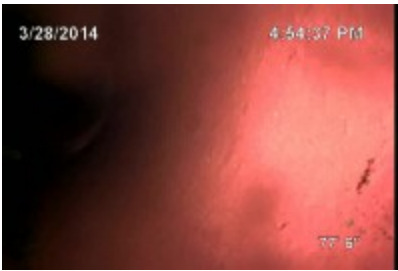
**3/28/2014 4:54:10 PM**

This is a video inspection of the main sewer line. This is the portion of the waste pipe system that carries the waste from the structure to the city sewer connection. This report is based on the video inspection of the sewer line only. Any other parts of the water supply system are not included. The report is not intended as a code inspection or to list each flaw noted. It gives an overall picture of the condition of the main line and the opinion of the technician at the time of inspection.

**OBSERVATIONS :** Access / Cleanout location : Property has a 2 inch cleanout access in basement and two 4 inch cleanouts in front yard of home. U.P.C. code requires cleanout access near its upper most terminal of horizontal piping and after horizontal change of direction exceeding 135 degrees of angle or every 100 feet, which ever comes first. U.P.C. section 707.4 - 707.5. Property has sufficient cleanout access as per code requirements.

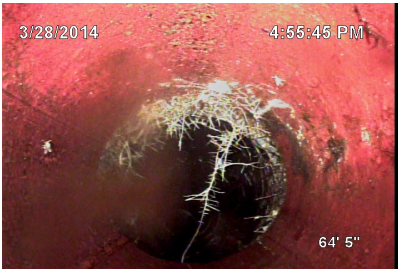
**SEWER LINE OBSERVATIONS :** After running camera through 77 feet of 4 inch Clay and A.B.S. plastic sewer line from house to the city connection, the conclusion was there was an obstruction 3 feet into the main line after going into 4 inch main line of waste at front of home cleanout. Large root intrusions appear to be obstructing flow of waste right after cleanout transition. Although water is draining, it is at an insufficient flow. Inner walls of pipe has a mild build up of scale and deposits possibly due to obstruction in pipe. Sewer line also contains multiple intrusions of roots at various joint connections up to city connection. intrusion of roots is a breaching of the pipes at connection fittings. Sewer system was also noted to have 12 foot section of clay pipe replaced with A.B.S. pipe at city connection due to possible past tree root issues.

**RECOMENDATONS :** Clear 4 inch main line of root intrusions by means of 1/2 inch snake cable and cutting tip. Cost is estimated at \$200.00. Also have main line sewer jetted with high pressure water jetter to remove all debris from root intrusions and scale buildup off inner walls of pipe. Cost is estimated at \$400.00



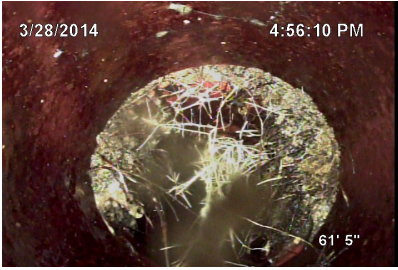
3/28/2014 4:54:37 PM  
City connection

77' 6"



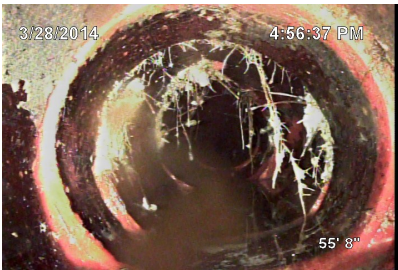
3/28/2014 4:55:46 PM  
Root intrusion

64' 5"



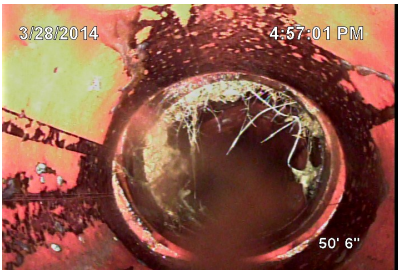
3/28/2014 4:56:11 PM  
Root intrusion

61' 5"



3/28/2014 4:56:37 PM  
Root intrusion

55' 8"



3/28/2014 4:57:02 PM  
Root intrusion

50' 6"

3/28/2014

4:59:01 PM

3/28/2014 4:59:01 PM

2' 2"

